

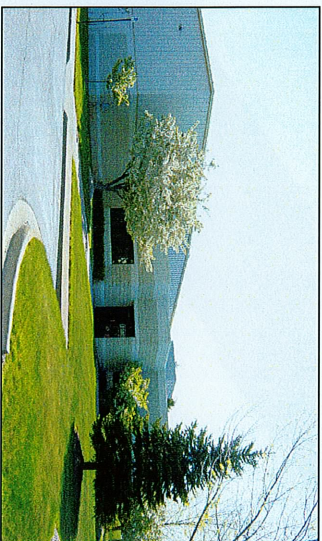
Why WEDGE-MILL?

*We are centrally located. We are within 30 minutes of Flint, Detroit, Lansing and Ann Arbor

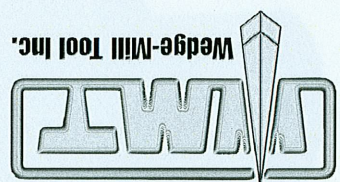
*We ensure that only the finest products leave our facility

*Our sales staff is eager to help you meet your tooling needs

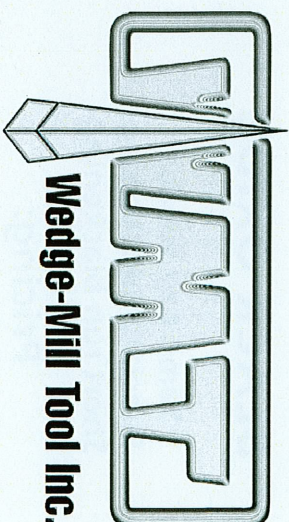
We look forward to becoming your ***specialty service supplier!***



For more information:
check out our updated website at
www.wedgemill.com

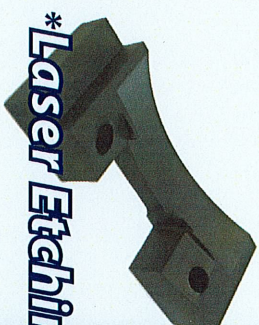


7771 Kensington Court
P.O. Box 689
Brighton, MI 48116



Wedge-Mill Tool Inc.

Our Specialty Services



****Laser Etching***



****Black Oxide***



****Blanchard Grinding***



Your Dependable Source for Quality Tooling

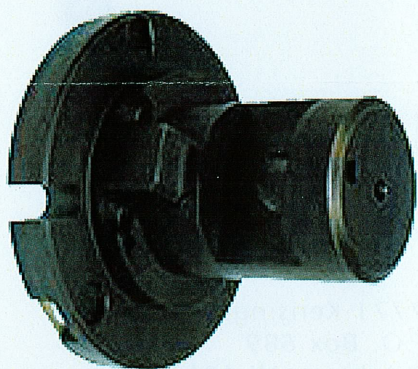
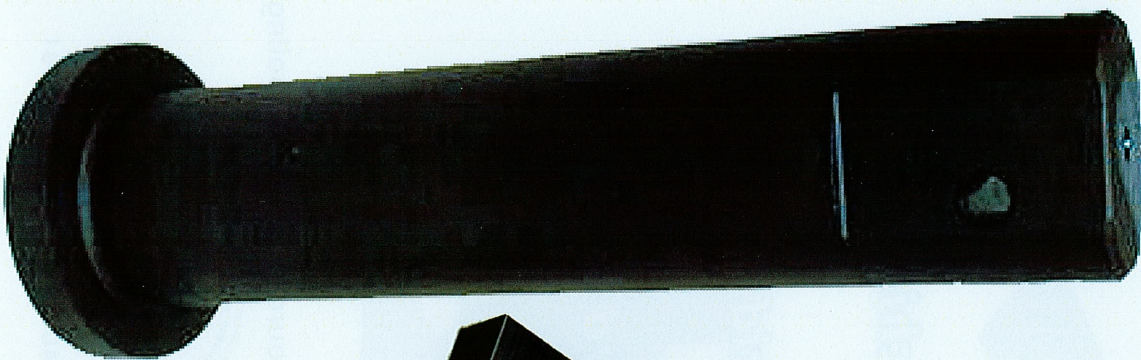
Phone: 248.486-6400 Fax: 248.486.6401

BLACK OXIDE

Same day service
Specialty blackening
Short run blackening

Pricing:

\$25.00 lot price up to 50 lbs.
\$0.50 per lb for each additional lb.

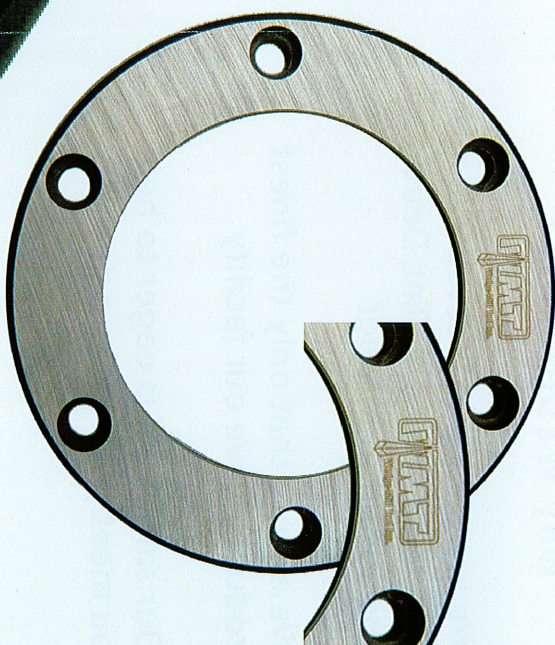
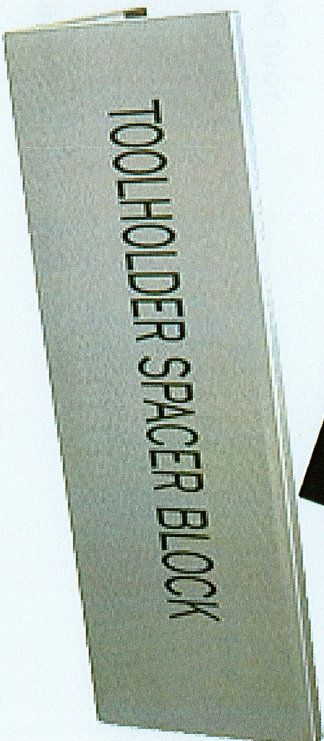


LASER ETCHING

Same day service
Latest laser technology
We etch a variety of materials

Pricing:

\$25.00 Set-up Fee plus per
piece price. For multiple
Set-ups, please call for quote



BLANCHARD GRINDING

Equipped with 36" chucks
We grind carbide and a variety
of steel grades

Pricing:

Please call us for a quote
248.486.6400

